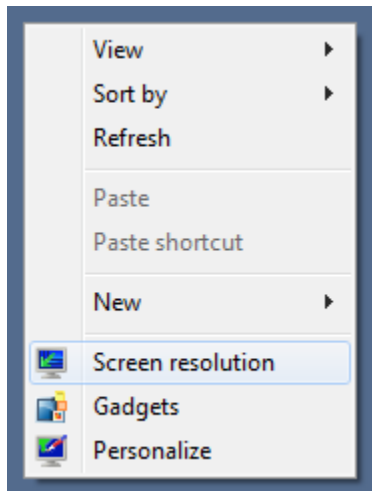


Increasing the Size of WISE Applets for Classroom Display

For PC users running Windows 7:

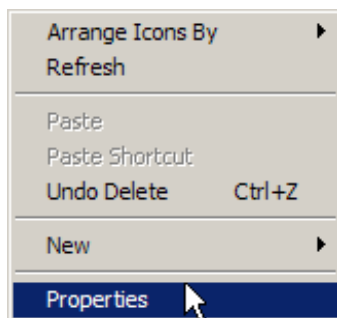
1. Right-click on the desktop (do not click on any icon or folder) and select **Screen Resolution**.



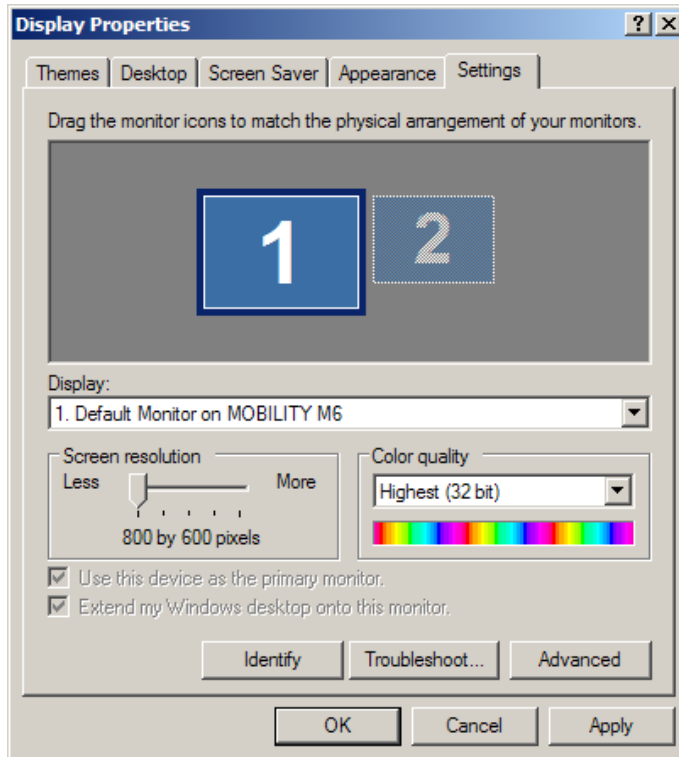
2. Take note of your current resolution. Select a lower resolution (such as 800x600) and click **OK**.
3. If prompted to confirm the changes, click **Keep Changes**.

For Earlier Versions of Windows:

- 1) Right-click on the desktop (do not click on any icon or folder) and select **Properties** or **Personalize** (Vista).



- 2) In the Display Properties window, select the **Settings** tab.
- 3) Slide the **Screen resolution** slider to the left to enlarge the appearance of the applet. *800x600 or less may work well for the WISE applets, depending on your monitor.*



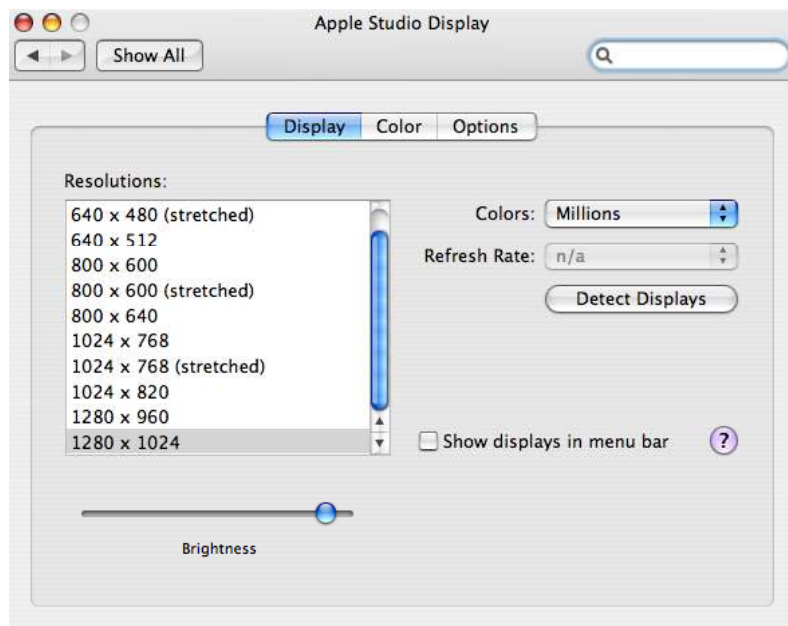
- 4) Click **Apply**.
- 5) If prompted to confirm the changes, click **Yes**.
- 6) Click **OK**.

For Mac OS X users:

- 1) Select **System Preferences** from the Apple menu or from the system toolbar.
- 2) Under **Hardware**, click on the **Displays** icon.



- 3) Locate the **Resolutions** box and select the desired setting.



- 4) If you encounter a new window titled, "About to change the display mode..." Click **OK**.